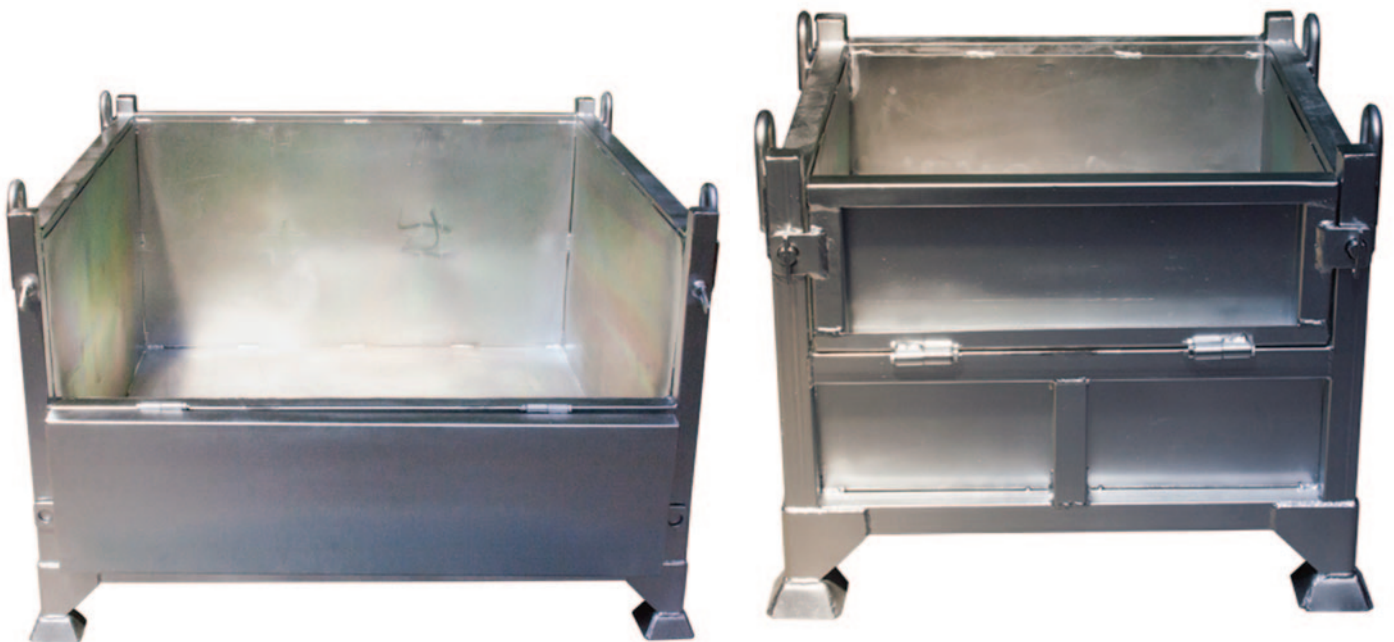


SBS Site Storage Boxes

- The type SBS HEAVY DUTY CRANEABLE STORAGE BOXES are available in two sizes and have been designed for the secure handling of heavy weight components/parts in and around your workshop and during transport.
- Both models feature a half drop-down front panel for ease of access.
- Durable Zinc Plated Finish
- The SBS115 has additional support bars for use with high bay racking.
- Easily transported by forklift or crane and are stackable up to 4 high when fully loaded.
- Working Load Limit (WLL): 1000kg
- Stackable 4 high when fully loaded.
- Crane Lifting lugs fitted as standard
- Drop down access panel on one side.



Code	Details	Overall Size (mm)	Unit Weight (kg)
SBS75	Craneable Storage Bin - 158 Litre	750 x 750 x 616	58
SBS115	Craneable Storage Bin - 580 Litre	1150 x 1150 x 776	115

ABOUT VERDEX EQUIPMENT

At Verdex Equipment, we have the largest range of manual handling and workplace materials handling equipment in Australia. This includes thousands of workplace and storage items suited to every workplace and lifting equipment and trolleys for almost every application. Our products aim to eliminate or reduce manual handling effort in the workplace, while boosting productivity and ensuring workplace safety.

VERDEX has over many years spent countless hours on product development and sourcing to ensure we can get products to make your workplace not only safer but more efficient.

VERDEX sources products from all over the world and sells them direct meaning there is no middle man or middle margin added giving you the best possible price and faster service. We also offer customised solutions with trolleys, lifters and many other materials handling equipment to ensure you have the perfect product to improve the safety and efficiency of your workplace.

VERDEX is dedicated to providing you with the highest quality products at the best possible price, with the best possible service. With a long and trusted reputation in the industry, VERDEX is a name you can rely on.