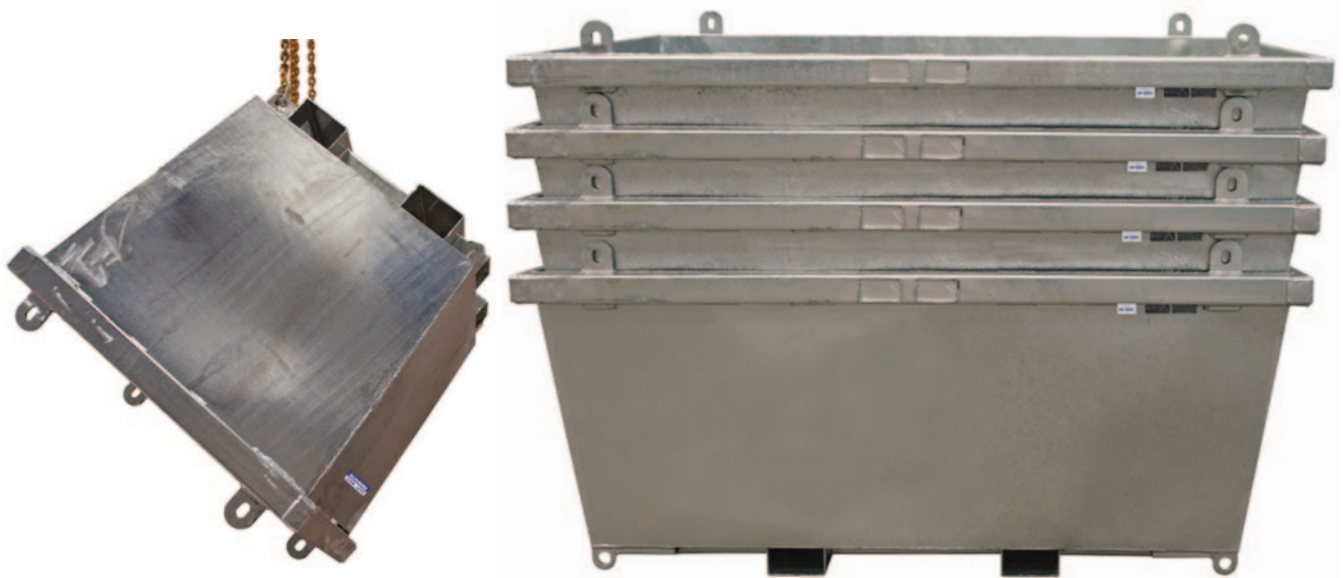


2 Tonne Fork/Crane Bins

- Heavy duty crane bins for all waste products
- These crane bins are space saving as they allow the bins to nest inside each other for transport and storage
- Safe Working Load: 2000kg
- 4-way entry fork pockets
- Optional wheels available
- Crane lugs as standard
- Finish: Zinc plated
- Fork Pocket Size: 160x95mm (length), 160x75mm (width)
- Fork Pocket Centres: (WB2743, WB2744 – 450mm), (WB2745 – 790mm)



Code	Details	WLL (kg)	Bin Capacity (L)	Fork Pocket Centres (mm)	Overall Size WxLxH (mm)	Unit Weight (kg)
WB2743	Crane Bin	2000	850	450	1156x1156x1100	162
WB2744	Crane Bin	2000	1300	450	1716x1156x1100	240
WB2745	Crane Bin	2000	2500	790	2316x1516x1100	335

Visit www.verdex.com.au for more images and details

ABOUT VERDEX EQUIPMENT

At Verdex Equipment we have the largest range of manual handling and workplace materials handling equipment in Australia. This includes thousands of workplace and storage items suited to every workplace and lifting equipment and trolleys for almost every application. Our products aim to eliminate or reduce manual handling effort in the workplace, while boosting productivity and ensuring workplace safety.

VERDEX has over many years spent countless hours on product development and sourcing to ensure we can get products to make your workplace not only safer but more efficient.

VERDEX sources products from all over the world and sells them direct meaning there is no middle man or middle margin added giving you the best possible price and faster service. We strive to ensure you have the perfect product to improve the safety and efficiency of your workplace.

VERDEX is dedicated to providing you with the highest quality workplace products at the best possible price, with the best possible service. With a long and trusted reputation in the industry, VERDEX is a name and company you can rely on.